



"Ergonomic Solutions"

**HTC11 - 2", 3", 4"
REDUCED VIBRATION CHIPPING HAMMER**



MADE IN THE USA

Honsa Ergonomic Technologies, Inc.

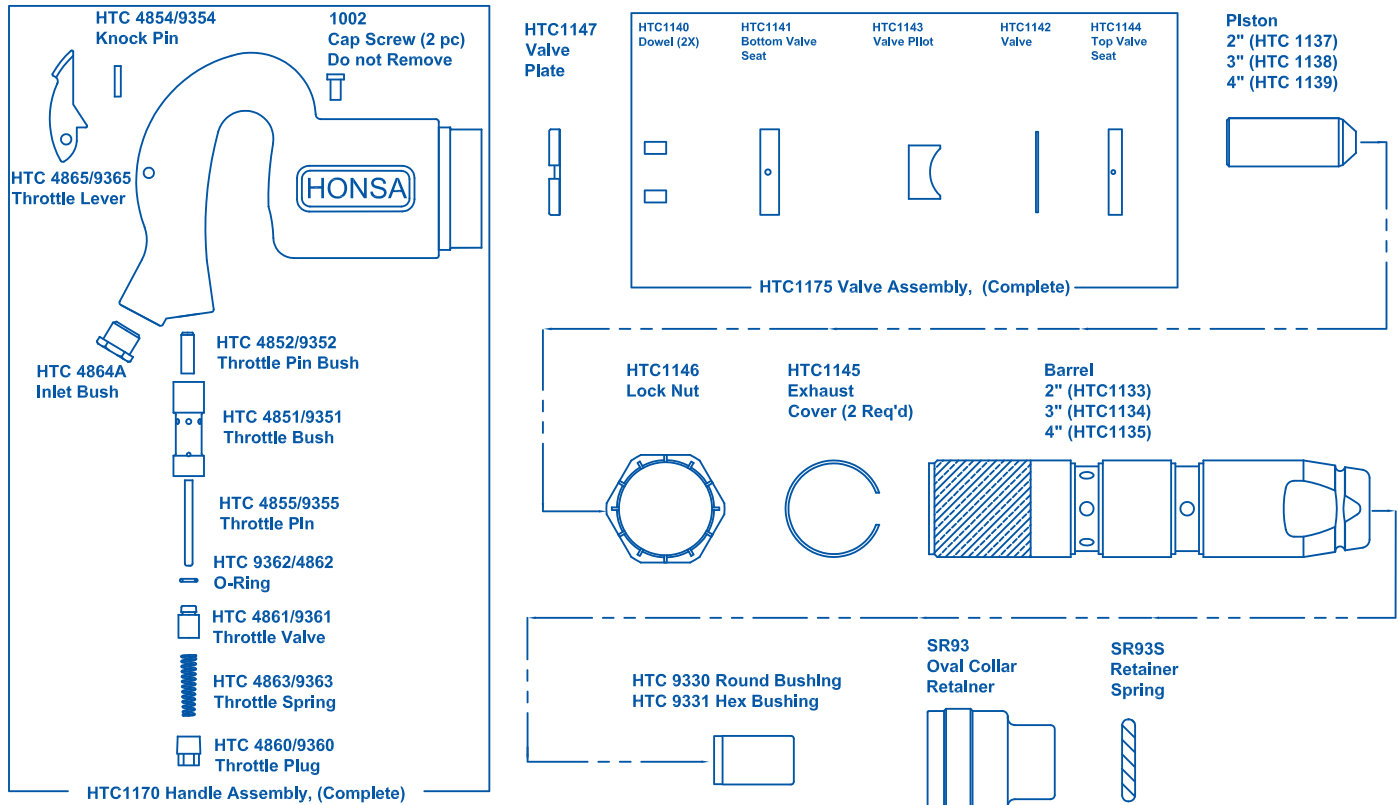
Made in the U.S.A.

1300 11th Street West | Milan, IL 61264 | Tel: 309.756.0200 | Fax: 309.756.0700 | Toll Free 800.800.9371 | www.honsatools.com

Copyright © 2015



HTC11 - 2",3",4" REDUCED VIBRATION CHIPPING HAMMER



MAINTENANCE PROCEDURES FOR HONSA TOOLS CHIPPING HAMMERS HTC 11 - 2", 3", 4"

DISASSEMBLY

- BEFORE REMOVAL OF THE BARREL THE $\frac{5}{16}$ "-18 X $\frac{1}{2}$ " SOCKET HEAD CAP SCREWS MUST BE IN BOTH $\frac{5}{16}$ " HOLES LOCATED AT THE TOP AND BOTTOM OF THE HANDLE HOUSING. **THESE SCREWS ARE INSTALLED BY THE MANUFACTURER AND SHOULD REMAIN PERMANENTLY IN PLACE. IF MISSING, DO NOT PROCEED AS PERMANENT DAMAGE MAY RESULT TO THE URETHANE DURING TIGHTENING OR LOOSENING. FAILURE TO USE PROPER PARTS VOIDS WARRANTY.**
- PLACE HANDLE IN VISE WITH BARREL POINTING UP AND WITH HANDLE FLATS AGAINST VISE JAWS. LOOSEN LOCK NUT. PLACE 30" (MINIMUM) WRENCH ON BARREL TAPER/FLATS AND LOOSEN BARREL. (DURING MAINTENANCE SHOULD AN OVERTIGHTENED BARREL NOT LOOSEN AFTER NORMAL EFFORTS, PLACE ENTIRE TOOL IN FREEZER OVERNIGHT AND ATTEMPT TO LOOSEN WHILE FROZEN. DO NOT USE A TORCH TO LOOSEN BARREL. SHOULD BARREL NOT BREAK FREE AFTER FROZEN CONTACT HONSA TOOLS FOR FURTHER INSTRUCTIONS.)
- REMOVE REMAINING PARTS AND INSPECT FOR WEAR. REPLACE WITH ORIGINAL HONSA PARTS AS NEEDED

ASSEMBLY

- REASSEMBLE ALL PARTS. HAND TIGHTEN HANDLE ONTO BARREL.
- BEFORE INSTALLATION OF THE BARREL THE $\frac{5}{16}$ "-18 X $\frac{1}{2}$ " SOCKET HEAD CAP SCREWS MUST BE IN BOTH $\frac{5}{16}$ " HOLES LOCATED AT THE TOP AND BOTTOM OF THE HANDLE HOUSING. **THESE SCREWS ARE INSTALLED BY THE MANUFACTURER AND SHOULD REMAIN PERMANENTLY IN PLACE. IF MISSING, DO NOT PROCEED AS PERMANENT DAMAGE MAY RESULT TO THE URETHANE DURING TIGHTENING OR LOOSENING. FAILURE TO USE PROPER PARTS VOIDS WARRANTY.**
- PLACE HANDLE IN VISE WITH BARREL POINTING UP AND WITH HANDLE FLATS AGAINST VISE JAWS. HAND TIGHTEN BARREL INTO HANDLE, OIL, AND RUN TOOL TO ENSURE PROPER VALVE OPERATION.
- PLACE HANDLE IN VISE WITH BARREL POINTING UP AND WITH HANDLE FLATS AGAINST VISE JAWS. LOOSEN LOCK NUT. PLACE 30" (MINIMUM) WRENCH ON BARREL TAPER/FLATS AND TIGHTEN TO 160 FT/LBS. DO NOT OVERTIGHTEN.
- TIGHTEN LOCKNUT TO 160 FT/LBS.
- RUN TOOL TO ENSURE PROPER OPERATION.
- AFTER 24 HOURS OF OPERATION, RE-TIGHTEN BARREL.

*** LUBRICATE DAILY ***

with HONSA Bio-Green Air Tool Lubricant 10WT

"Ergonomic Solutions"

Honsa Ergonomic Technologies, Inc.

Made in the U.S.A.

rev 01/2020

HONSA TOOL OPERATING INSTRUCTIONS/CAUTIONS

-BEFORE PLACING THIS TOOL IN OPERATION, READ THE FOLLOWING INSTRUCTIONS-

This new tool is designed to reduce the vibration normally transmitted to the Operator. To be effective, it must be used safely. The Operator should only hold the tool by the handle provided. The vibration damping system is built into this handle, so the Operator should not hold this tool by the barrel, chisel, or rivet set. If the operation requires holding a chisel or rivet set, a HONSA TOOLS ISOLATOR should be utilized on that portion of the tool.

WARNING: While this tool is designed to significantly reduce the vibration, it is not guaranteed, nor implied to totally remove vibration. Safety procedures and evaluation systems such as those recommended and described in ANSI s3.34, ISO 5349 & ISO 8662 and by the ACGIH for threshold limits of vibration should be used as guidelines for daily exposure of hand-arm vibration. These values should be used as guides for the control of hand-arm exposure and because of individual susceptibility, should not be regarded as defining a boundary between safe and dangerous levels.

THE FOLLOWING SAFETY PROCEDURES ARE RECOMMENDED BY THE COMPRESSED AIR AND GAS INSTITUTE:

1. Eye protection **must** be worn at all times when operating power tools.
2. Ear protection **must** be worn at all times when operating power tools.
3. A retainer should be installed on a percussion tool which, without such a retainer, can eject the chisel or rivet set, punch or similar equipment, when the tool is operated off a work surface. **NEVER OPERATE TOOL WITHOUT A RETAINER OR WHEEL GUARD.**
4. If a Quick Disconnect coupling is used on a percussion tool, it should be separated from the tool with a whip hose.
5. A percussion tool should not be operated unless the chisel, rivet set, scaling tool, or other is in position in the tool and in contact with the work place. Tools should be used in such a manner that ejection of an accessory **will not** endanger adjacent personnel.
6. When percussion tools are not in use, the dies and accessories should be removed unless they are retained in a positive manner.

PROPER OPERATION AND MAINTENANCE

Daily before using, before putting a new or old tool into service and after eight hours of use, pour about one tablespoon of HONSA Bio-Green Air Tool Lubricant 10WT into air inlet, connect air hose and operate tool to allow oil to be carried throughout the interior.

Never operate the tool without a chisel, rivet set, or plunger in the set sleeve and without holding the tool against the work surface. This precaution avoids damage caused by the piston striking the cylinder/barrel retaining wall. When a rivet set, chisel, or plunger is in the set sleeve, the end protrudes beyond the retaining wall so that the piston never strikes the retaining wall, resulting a freezing piston in the cylinder/barrel.

1. Keep tool properly lubricated with HONSA Bio-Green Air Tool Lubricant 10WT.
2. Provide 90 PSIG (6.2 bar) of clean, dry air **AT THE TOOL**.
3. Set up and maintain an inspection and repair program, regularly scheduled at intervals, governed by the degree of use to which the tool is subjected.
4. Blow out any dust and debris from inside hose before connecting it to tool.
5. Ensure that the cylinder/barrel is completely tight in the handle assembly.
6. Replacement of worn minor parts will avoid more extensive repairs and maintain the tool at its highest efficiency.



WARRANTY

Honsa Tools warrants this tool to be free of defects in materials and original workmanship for **1 year from date of purchase**. **The obligation assumed under this guarantee is limited to the replacing of any part or parts which prove to our satisfaction, under examination, to have been defective. This guarantee does not cover damage caused by misuse or normal wear, dirt or debris.**

Honsa Tools makes no other warranty, and implied warranties for fitness for a particular use or purpose are hereby disclaimed. Honsa Tools' liability is limited to the purchase price of the tool and Honsa tools shall not be liable for consequential, indirect or special damages of any nature arising from the sale or use of Honsa tools.

The warranty shall not apply to any tool that has been subjected to: misuse, accident, negligence or modification; or in which parts not made and supplied by Honsa Tools have been used, altered or repaired by other than Honsa Tools personnel or authorized repair/maintenance companies, or in the determination of Honsa Tools, any non intended use affecting its' operation.

Factory Service

Any tool being returned for service must be pre-approved and a return authorization number must be issued for each tool by approved Honsa Tools personnel.

All Honsa Tools must be sent prepaid to:

Honsa Ergonomic Technologies, Inc.
1300 11th Street West
Milan, IL 61264

Honsa Ergonomic Technologies, Inc.

Made in the U.S.A.

1300 11th Street West | Milan, IL 61264 | Tel: 309.756.0200 | Fax: 309.756.0700 | Toll Free 800.800.9371 | www.honsatools.com

Copyright © 2015